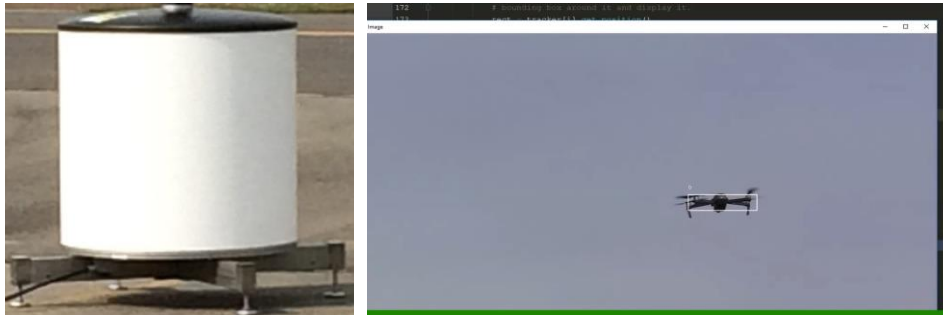


MADS Detect & Track Radar



Instrumented range	5.0 kilometre
Detection range micro-UAV	4 kilometre
Classification range micro-UAV	1100 meter
Beam width	10° x 10°
Azimuth resolution	1°
Range resolution	5 meter
Elevation range	0.5° - 10.5° above horizon, adjustable
Technology	FMCW, Solid-state
Frequency	9600 - 9700 MHz (X-Band)
Power (continuous)	4 Watt / 36 dBm
Track-while-scan	Yes
Rotation speed	45 RPM, update rate 0.75 Hz
Classification method	Micro Doppler
Dimensions	0.9 meter diameter, 1.0 meter height (ex. mount)
Weight	83 kg (ex. mount)
Power	230VAC / 50Hz / max. 3A
Communication	Ethernet, 1000Base-T

MADS Detect & Track Laser



Measurement range 0 to 5,000 m

Suitable Applications

- Sniper detection
- Perimeter intrusion detection
- Border control and protection
- Counter-intelligence operations
- VIP protection
- Protection of critical infrastructures
- Drone Camera Detection

MADS Detect & Track Camera



- Detect & Track
- 360° Camera
- Infrared optional
- Fieldtested against drones



- Track and optical DF

MADS Detect & Track Sound



- Array of microphones
- Beamforming
- Max. 300m reliabel

MADS RF Detect & Track (DF)



- Detects automatically:

Phantom 4 pro, Mavic pro, Mavic air, Inspire 1, Inspire 2, Matris

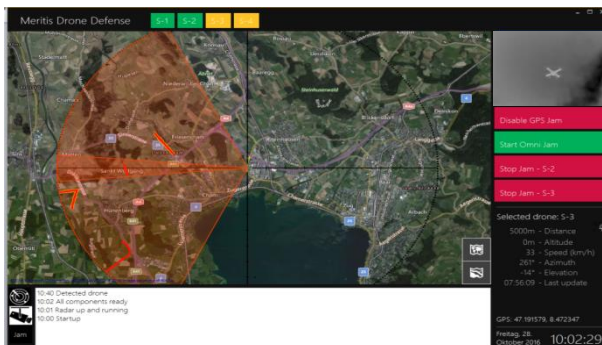
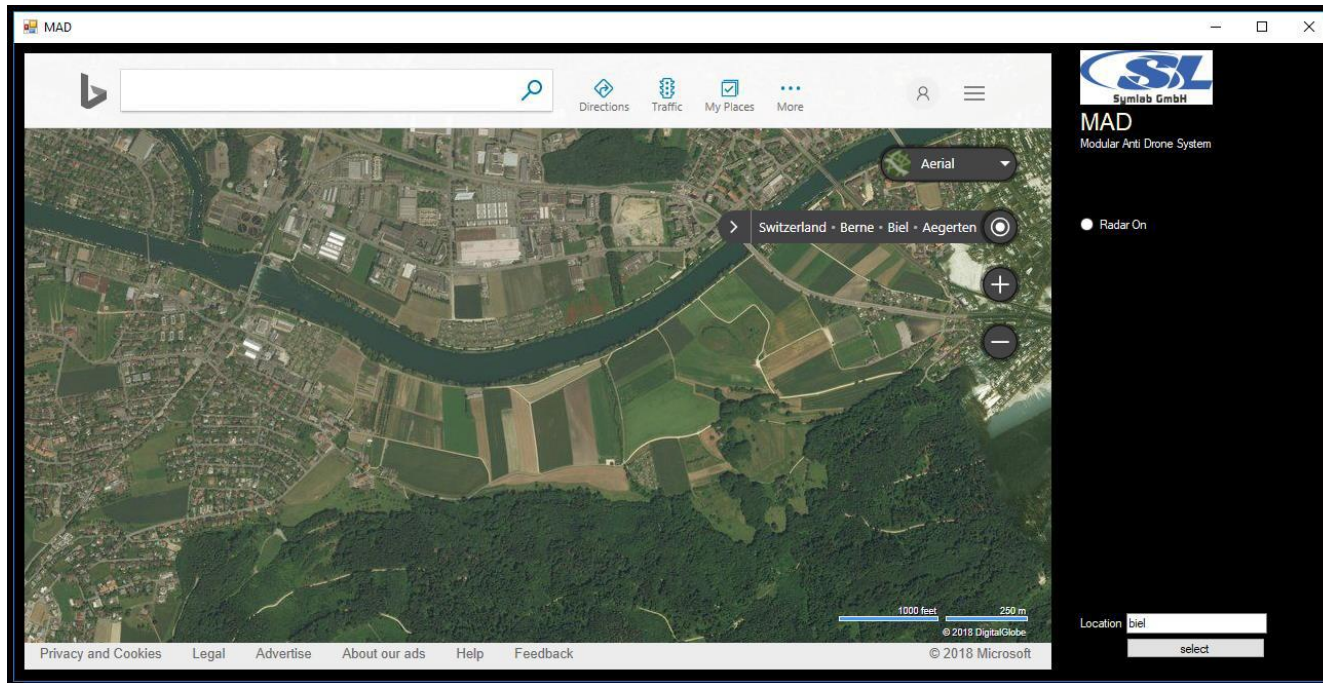
- RF track
- RF analysis
- Perfect for big areas

MADS Jamming



- Omni or directional
- Reactive
- Smart waveforms
- GNSS on request

MADS OMC



- Map
- Area of interest
- Results correlated
- Camera on/off
- Jamming link or/and GPS
- Omni/directional jamming



Georg Stirnimann
CEO Symlab GmbH
georg.stirnimann@symlab.ch

Bollhoelzliweg 36
CH-3067 Boll (Bern)
Switzerland

T +41 79 708 10 94

www.symlab.ch